

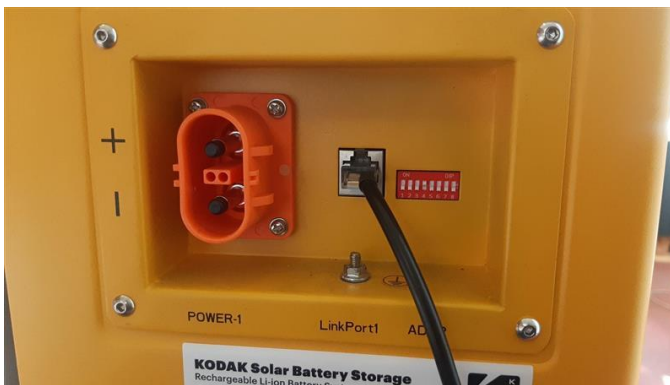
## Update guide for the Kodak FL5.2 battery

The following is required to do an update on the FL5.2 battery.

- RS485 to USB converter cable. The following cable is recommended: [FL5.2-UPGRADE-Cable](#)
- Laptop to run the upgrade software.
- The upgrade software and firmware

### Preparing the battery for firmware update

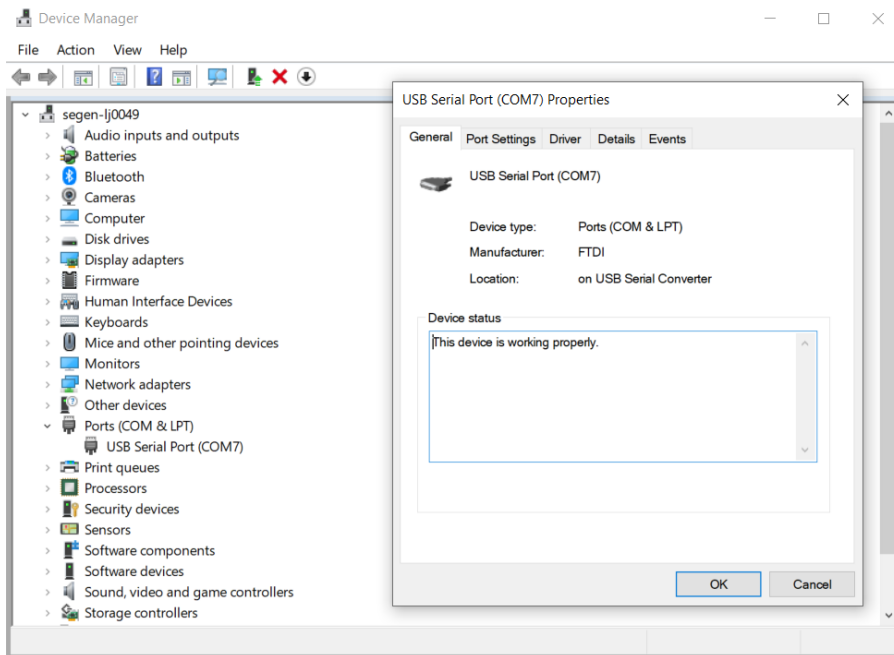
- Please completely switch off the system. This includes the battery, inverter and all power towards the system.
  - Disconnect the BMS and power cables from the battery.
  - Switch on the BMS only. This can be done by pressing and holding the large silver switch on the battery for 3 seconds. It is on when all the LED's on the battery switch on and stay on.
  - The following steps will guide you on how to upgrade the FL5.2 battery.
1. Plug the RJ54 side of the cable into the link port on the battery showed below. Plug the USB side into the laptop.



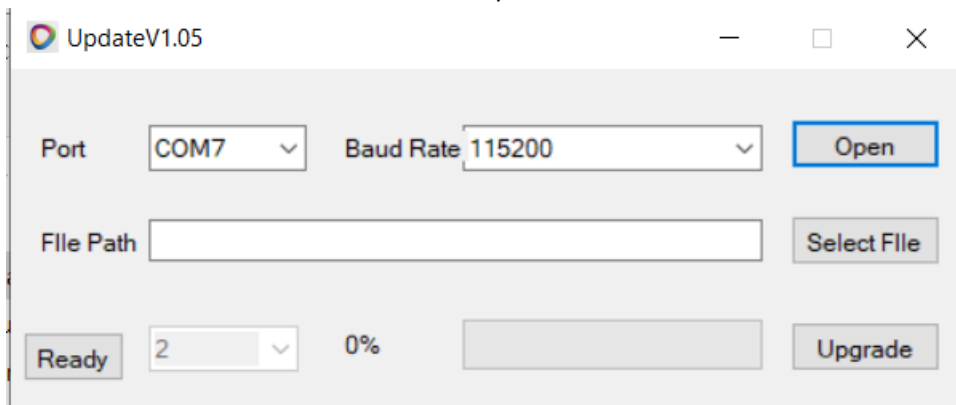
2. Ensure the DIP switches of the battery is 00010000 (0 is down and 1 is up) as the image below shows.



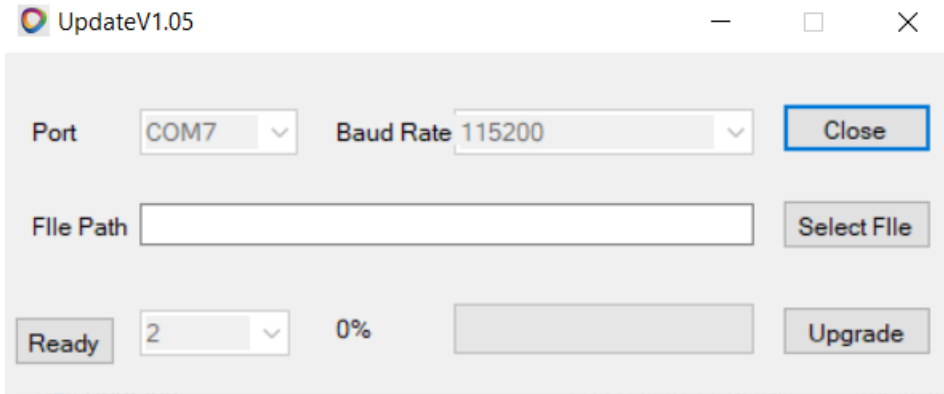
- Please ensure that the cable is detected by your laptop. This can be verified by going to the following location on your laptop. Control panel -> Device manager -> and expand the Ports (COM & LPT). It should look like the below. Please note that your device might have a different COM number. It will be COMX (where X is any number).



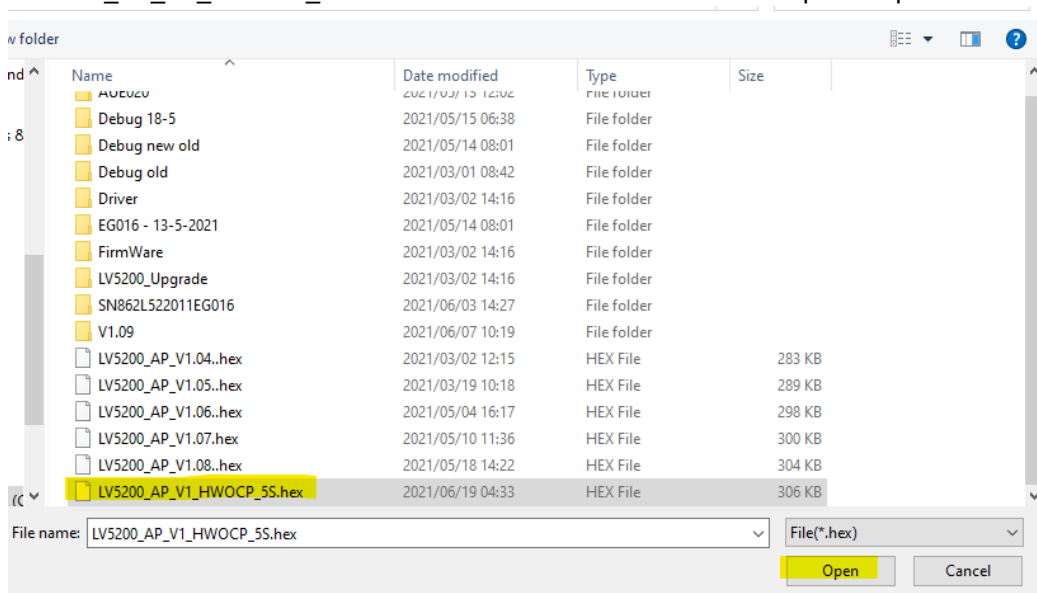
- Open the file with the upgrade software. The file will be called LV5200\_Upgrade.
- Open the application called "Upgrade". The follow window will display. Ensure that the port selected is the same COM as found in step 3.



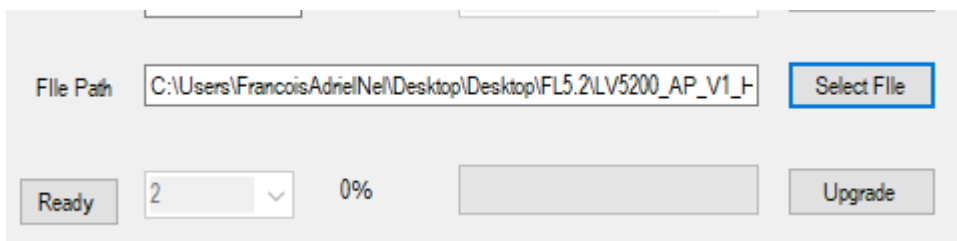
- Press 'open'. The window will now look as follow. The Port and Baud Rate will now turn grey.



- Now select the correct firmware. This is done by pressing 'Select File'. Navigate to where the firmware is saved locally on the laptop. The file is called the following by default: 'LV5200\_AP\_V1\_HWOCP\_5S.hex'. Once the correct file is selected press 'open'

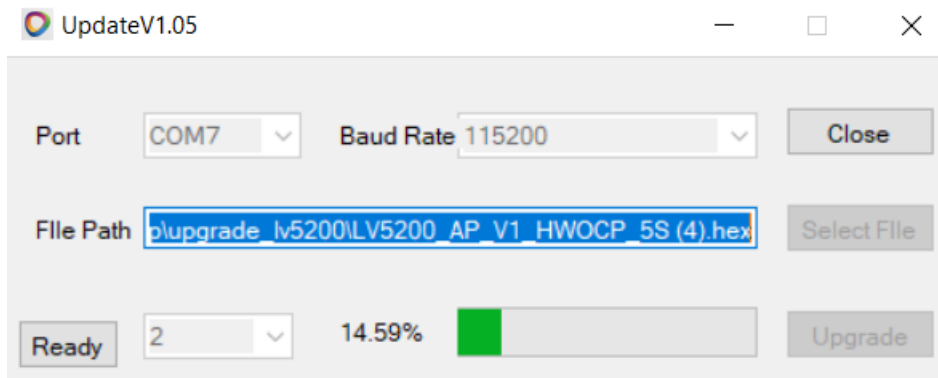


- Once the file is selected, you will be returned to the previous screen and the File Path will now show the path to the firmware that was selected in the previous step. Press the 'Ready' button.



- The LED's on the battery will now start flashing. If the battery is completely of after the previous step, please switch the battery on only by pressing the large silver button on the battery for 3 seconds. The battery will switch on and all the LED's will start flashing.

10. Now press 'Upgrade'. The battery will now start the upgrade process. The window will look like the following. Please wait for the upgrade to complete.



11. Once the upgrade is completed. The window will look as follow. Please wait for the battery to completely switch off by itself. This means the upgrade was successful. Disconnect the RS485 to USB converter from the battery and connect the battery back to the system and power on as per the normal procedure.

